



COOK COMPANY



CORPORATE OFFICE



Product Guide



LOREN COOK COMPANY

Category	Examples	Page	Category	Example	Page
FEATURES & OPTIONS LEGEND		3	INDUSTRIAL BLOWERS & FANS		17
ROOF & WALL CENTRIFUGAL EXHAUST FANS		8	PLUG & PLENUM FANS		19
ROOF MOUNT CENTRIFUGAL SUPPLY FANS		10	CEILING & WALL CABINET FANS		20
ROOF MOUNT PROPELLER EXHAUST FANS		11	AIR CIRCULATORS & AIR CURTAIN		21
ROOF MOUNT PROPELLER SUPPLY FANS		12	LABORATORY EXHAUST		22
WALL MOUNT PROPELLER FANS		14	GRAVITY VENILATORS		24
INLINE MIXED FLOW & CENTRIFUGAL FANS		15	ENERGY RECOVERY & HEATED MAKEUP		25
INLINE AXIAL FANS		16	VARI-FLOW CONTROLS		26





24 HOUR EXPRESS

- ▶ HVAC industry's first and most successful custom assembly, next day shipping service.
- ▶ More than 850 items available.
- ▶ Specify CFM, horsepower, voltage, accessories, etc.
- ▶ Units are custom built, test run and shipped the next working day.



VARI-FLOW®

- ▶ Cook's offering of EC/PM motors and compatible controls.
- ▶ Superior part-load efficiency and demand-based control.
- ▶ Economical controllability for optimal ventilation at the lowest energy consumption.



SMOKE CONTROL

- ▶ Cook offers the industry's broadest product selection.
- ▶ Cook pioneered the development of UL's "Power Ventilator for Smoke Control Systems" in 1990.



UL RESTAURANT EXHAUST

- ▶ UL Listed Power Roof Ventilators for Restaurant Exhaust.
- ▶ Tested to handle grease-laden air at elevated temperatures and during grease flare-up.
- ▶ Designed to meet the National Fire Protection Association (NFPA) Standard 96 installation guidelines.



SEISMIC

- ▶ Seismic rated fans have been 3rd party shake table tested.
- ▶ Tested in accordance to ICC-ES AC156 with an acceleration ranging to 2.5G's (SDS = 2.50).
- ▶ All test accepted by California Office of Statewide Health Planning and Development (OSHPD) as part of their pre-approval program.



MIAMI-DADE

- ▶ Product designed for high wind velocity weather.
- ▶ Tested and met Miami-Dade County's TAS-201, TAS-202, and TAS-203 criteria.
- ▶ Florida Building Commission approved.



AMCA

- ▶ Cook products bearing AMCA Certified Ratings label.
- ▶ These products have been tested in Cook's own accredited laboratories and checked by AMCA international.
- ▶ This third-party certification ensures performance as promised.

ICON MAY NOT APPLY TO ALL MODELS. PLEASE SEE PRODUCT CATALOG FOR AVAILABILITY.



COOK SELECT

Efficient and Powerful Fan Selection Tool

- Browser-based. No downloads!
- Always up-to-date!
- Simple, intuitive user interface
- Contextual linking to lorenccook.com
- Stable and reliable
- Visual cues aid selection
- Flexible viewing structure
- As fast as your internet connection will allow!

COOK SELECT Dashboard AMCA

Job: 1-24-2022 9:14:46 AM Mark 4 1 Model Selection

FILTERS Clear All

PRODUCT FAMILY

- General Ventilation Fans
- Energy Recovery Ventilators
- Crawly Ventilators
- Lab Exhaust Fans

DRIVE TYPE

- Belt Drive
- Direct Drive

AIRFLOW TYPE

- Exhaust
- Supply
- Circulator
- Reversible

INSTALLATION LOCATION

- Ceiling
- Floor

INFORMATION

SELECTED MODEL

101 ACED (EC)

DESIGN CONDITIONS

Airflow: 1000 CFM
 Static Pressure: 0.250 in. wg
 Altitude: 0 ft
 Ambient Temperature: 70 °F

PERFORMANCE

Airflow: 1,000 CFM
 Static Pressure: 0.250 in. wg
 Fan Speed: 2767 RPM
 Motor: 0.559 HP
 Power: 0.959 HP
 Max Speed with Damper: 2800 RPM

Drive Type	Speed Control	Var-Flow Controls	SimpliDrive	Airflow (CFM)	Static Pressure (INWG)	Nominal Impeller Size (IN)	Drive Loss	Wheel Width	Brake HP	Motor HP	Hz	F
Direct Drive	EC			1,000	0.250	10.0	100%	0.559	0.625			
Belt Drive	None			1,500	0.250	12.0	15%	100%	0.266	0.359		
Belt Drive	VFD			1,500	0.250	12.0	15%	100%	0.266	0.500	49	
Belt Drive	None			1,500	0.250	12.0	15%	100%	0.359	0.500		
Belt Drive	VFD			1,500	0.250	12.0	15%	100%	0.359	0.500	54	
Direct Drive	EC			1,500	0.250	12.0	100%	0.229	0.250			
Direct Drive	EC			1,500	0.250	12.0	100%	0.416	0.750			
Direct Drive	EC			1,500	0.250	12.0	100%	0.512	0.322			
Direct Drive	FSL			1,500	0.250	12.0	100%	0.229	0.250			
Direct Drive	None			1,524	0.291	12.0	100%	0.241	0.260			
Direct Drive	VFD			1,500	0.250	12.0	100%	0.229	0.359	53		
Direct Drive	None			1,659	0.301	12.0	100%	0.302	0.333			
Direct Drive	VFD			1,500	0.250	12.0	100%	0.312	0.500	53		
Direct Drive	None			1,657	0.330	12.0	100%	0.457	0.500			
Belt Drive	VFD			1,500	0.250	12.0	100%	0.300	0.500	44		
Belt Drive	None			1,800	0.286	12.0	100%	0.260	0.260			
Belt Drive	VFD			1,800	0.286	12.0	100%	0.470	0.500	53		
Belt Drive	None			1,500	0.250	12.0	14%	100%	0.470	0.500		
Direct Drive	EC			1,500	0.250	12.0	100%	0.201	0.250			
Direct Drive	EC			1,500	0.250	12.0	100%	0.410	0.500			
Direct Drive	VFD			1,500	0.250	12.0	100%	0.170	0.333	59		

- Easy-to-read summary view form
- Live, synchronized information panel updates with selection grid navigation
- Customizable grid columns
- Data filters and sort capability
- Collapsible/expandable information sections



Key Features

Selection Options For Everyone

Thumbnail images with key at-a-glance information, powerful filters, and product search field allow efficient product selection, whether seasoned system designer or relative novice.

COOK SELECT Dashboard AMCA Tools Help

Job: 1-24-2022 9:14:46 AM Mark 1 1 Model Selection 2 Design Conditions 3 Unit Selection

FILTERS Clear All

PRODUCT FAMILY

- General Ventilation Fans
- Energy Recovery Ventilators
- Crawly Ventilators
- Lab Exhaust Fans

DRIVE TYPE

- Belt Drive
- Direct Drive

AIRFLOW TYPE

- Exhaust
- Supply
- Circulator
- Reversible

Product Search Field

Powerful Filters

Product Thumbnails

ACE Cost: \$5 Downblast Centrifugal Exhaust Ventilator Max Airflow: 38,310 CFM Max Static Pressure: 4.48 in. wg

ACRU Cost: \$5 Upblast Centrifugal Exhaust Ventilator Max Airflow: 28,806 CFM Max Static Pressure: 10.5 in. wg

ACSC Cost: \$5 Upblast Centrifugal Roof Exhaust Ventilator for Smoke Control Max Airflow: 28,806 CFM

ACW Cost: \$5 Centrifugal Exhauster Wall Mounted Max Airflow: 10,106 CFM

Customizable Selection Grid

COOK SELECT Dashboard AMCA Tools

Job: 1-24-2022 9:14:46 AM Mark 3 1 Model Selection 2 Design Conditions 3 Unit Selection 4 Unit Configuration

Show Unselected

Unit Name	Drive Type	Speed Control	Var-Flow Controls	SimpliDrive	Airflow (CFM)	Static Pressure (INWG)	Nominal Impeller Size (IN)	Drive Loss	Wheel Width	Brake HP	Motor HP	Hz	F
101 ACED	Direct Drive	EC			1,000	0.250	10.0	100%	0.559	0.625			
120 ACEB	Belt Drive	None			1,500	0.250	12.0	16%	100%	0.266	0.359		
120 ACEB	Belt Drive	VFD			1,500	0.250	12.0	16%	100%	0.266	0.500	49	
120 ACEB OR92	Belt Drive	None			1,500	0.250	12.0	15%	100%	0.359	0.500		
120 ACEB OR92	Belt Drive	VFD			1,500	0.250	12.0	15%	100%	0.359	0.500	54	

Drag-and-drop column arrangement puts information where you want it. Data filters and sort capability allow you to quickly narrow fan selections. Sort by ascending or descending order or search for the exact data point you are looking for!



Contact your Cook Representative for more information or to schedule a training session!



While in the unit selection step, the information panel on the right provides live, synchronized, easy-to-read summary of key fan information

Thumbnail Image and Model Confirmation

Useful when evaluating multiple models and sizes.

Product Performance Summary

Confirms operating point and summarizes key data including fan speed, VFD Hz (if appropriate), brake horsepower, and max speed with current motor!

AMCA Label and lorencook.com Product Page

Convenient links to Information when you need it!

Customizable Fan Curve

Configure view with a few clicks. Clicking on the 'flyout' icon on the upper right reveals a synchronized printable product summary page with interactive configurable fan curve.

Overall Product Dimensions

Key dimensions allow you to quickly evaluate physical size against available space!

Scheduling Fans is Quick and Easy

Quickly order fields to your liking, add notes and export to .xlsx file format!

Export Schedule

Mark Name	Unit Name	Notes	Manufacturer	Drive Type	Speed Control	Airflow (CFM)	Static Pressure (in. wg)	Nominal Impeller Size (in)	Wheel Width (%)
Mark	120 TLED	1, 2, 3, 4, 5, 6	COOK	Direct Drive	EC	1,500	0.250	12.0	100%
Mark.2	120 ACEB	1, 2, 3, 5	COOK	Blade Drive	None	0.250	0.250	12.0	100%

Notes Tool is Simple Yet Powerful

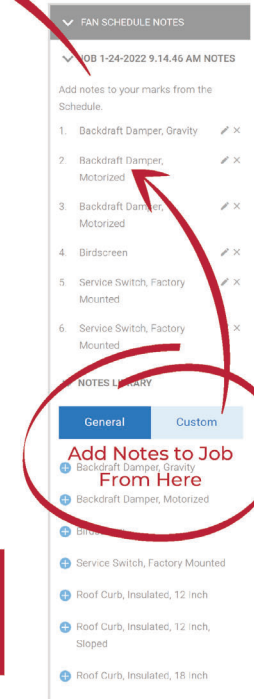
Adding notes is a simple process:

- Select from provided general notes
- Create custom notes
- Add these notes to your job
- Assign notes to specific fans

Give Us Your Feedback!

cookselect.lorencook.com

Feedback via Help link at the top of each screen



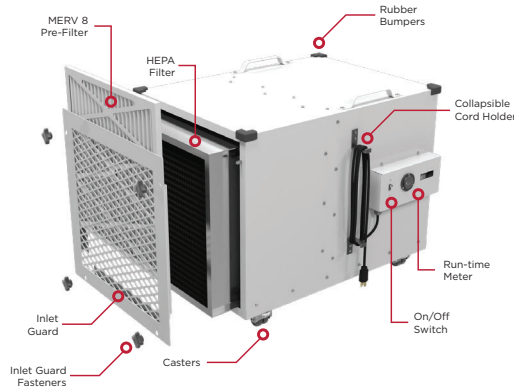
MAC Mobile Air Cleaner

Air filtration exactly where you need it!

Cook's Mobile Air Cleaner can be moved into service at a moment's notice.



Standard Features:



- MERV 8 pre-filter - (24x24x1")
- 99.97% efficient HEPA filter - (24x24x12")
- Airflow range: 500 - 2000 CFM
- Lorenized powder coat finish
- Swivel casters with locking brakes
- 9 foot, 115 volt power cord
- Variable speed control
- Illuminated on/off switch
- Run-time meter
- Tool-less filter changes



Contact your **Cook Representative** or visit lorencook.com for more information!

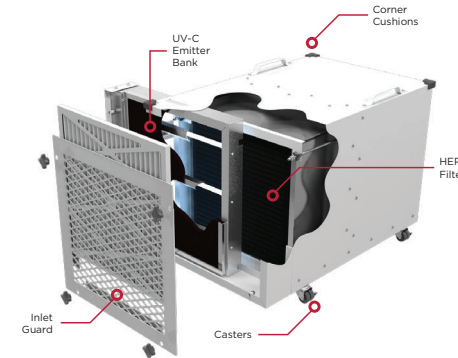
MAC UV Mobile Air Cleaner

HEPA Filtration and UVGI in one package!

The MAC UV captures airborne pathogens and inactivates them with a UV-C light bath.



Standard Features:



- 270 watts of constant UV-C germicidal irradiation
- HEPA - 99.97% efficient filtration
- Airflow range: 500-1900 CFM
- Lorenized powder coat finish
- 4" swivel casters with locking brakes
- 9 foot, 115V power cord
- Variable speed control
- Illuminated on/off switch
- Run-time meter
- Corner cushions



Contact your **Cook Representative** or visit lorencook.com for more information!

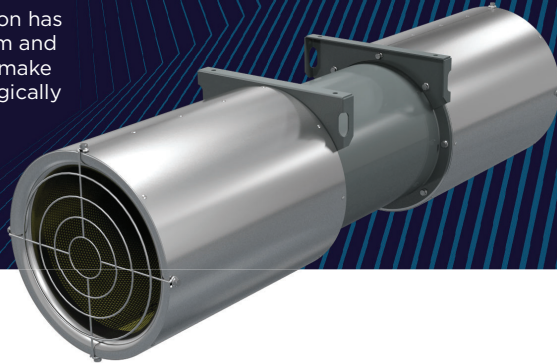


JetStream

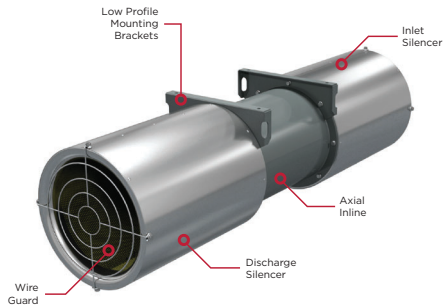
Ductless Bi-directional Jet Fan

Ventilate your parking facility, quietly and efficiently!

Ductwork in garage ventilation has its drawbacks. Low headroom and closely spaced beams often make ductwork impractical. Strategically placed JetStream fans push or pull the air through the entire structure, sweeping it free of CO and other noxious gases.



Standard Features:



- At the heart of the JetStream fan is a tube axial fan with a high efficiency cast aluminum propeller
- Direct drive for efficiency and reduced maintenance
- Compact design
- Flexible performance
- Low profile mounting brackets
- Inlet and outlet silencers for quiet operation
- UL Listed for smoke exhaust in emergency situation
- Available in three compact sizes with a wide range of performances



Contact your **Cook Representative** or visit lorencook.com for more information!

VFD

Variable Frequency Drives Streamlined!

Fan, Motor and VFD from one source!



Standard Features:



- Precision motor control for demand-based ventilation and energy savings
- Robust and reliable
- Soft start and stop increases life of fan components
- Simple installation
- Easy programming
- Direct interface with Cook complete line of Vari-Flow controls
- Modbus compatible
- BACnet compatibility on HVAC drives

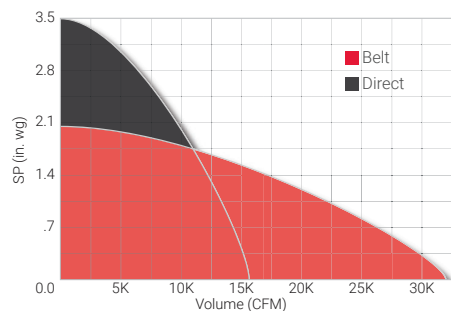


Contact your **Cook Representative** or visit lorencook.com for more information!



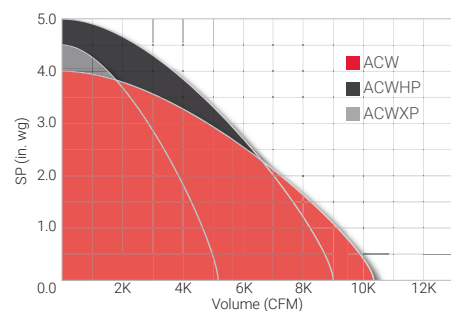
ACE

Size Range:
Belt - 100 to 540
Direct - 70 to 300



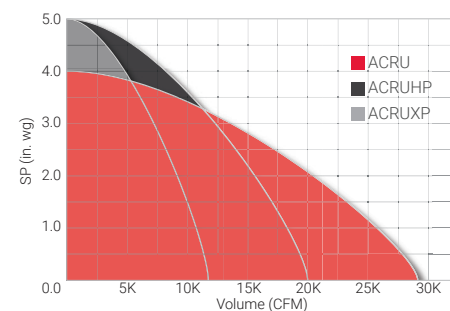
ACW

Size Range:
Belt - 100 to 245
Direct - 70 to 245



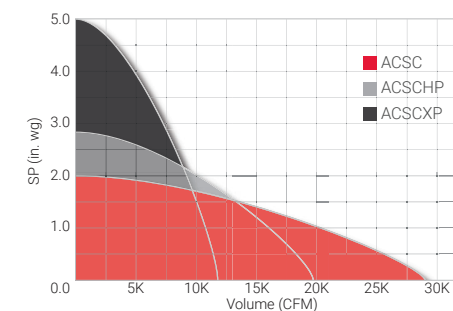
ACRU

Size Range:
Belt - 100 to 490
Direct - 70 to 300



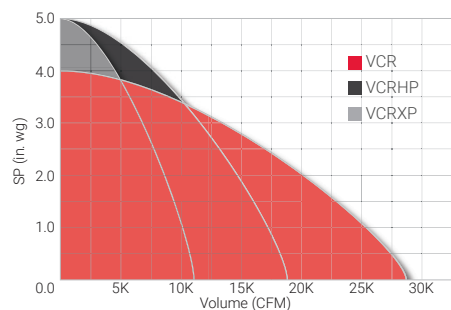
ACSC

Size Range:
Belt - 100 to 490



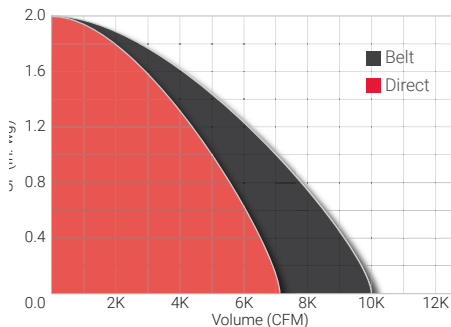
VCR

Size Range:
Belt - 100 to 490
Direct - 101 to 300



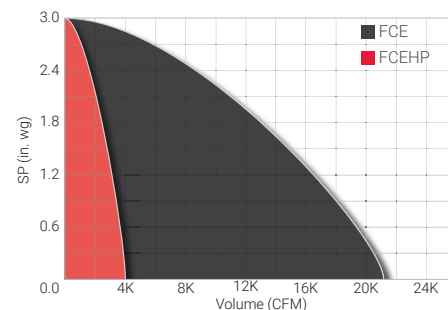
SRSH

Size Range:
Belt - 60 to 270
Direct - 60 to 180



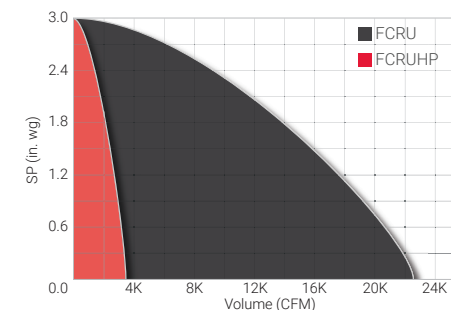
FCE

Size Range:
Belt - 120 to 402
Direct - 120 to 180



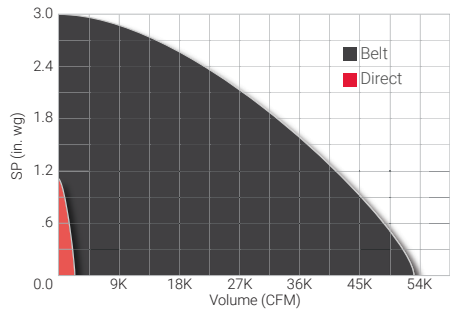
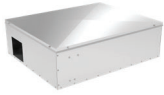
FCRU

Size Range:
Belt - 120 to 402
Direct - 120 to 180



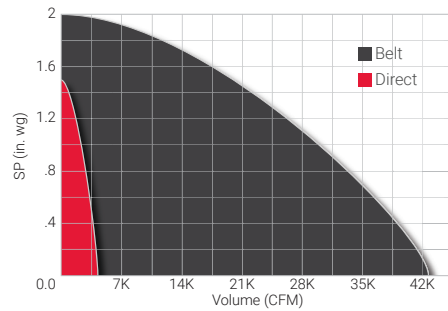
LP

Size Range:
Belt - 100 to 540
Direct - 100 to 165



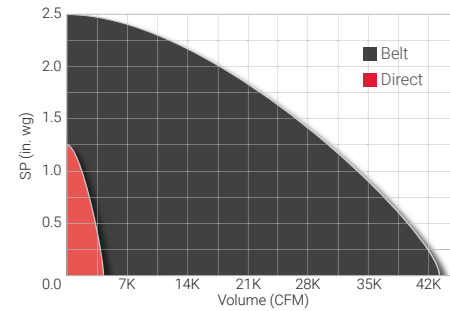
HLC

Size Range:
Belt - 100 to 540
Direct - 70 to 180



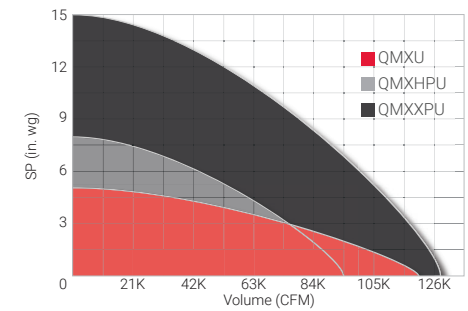
TLC

Size Range:
Belt - 100 to 540
Direct - 70 to 180



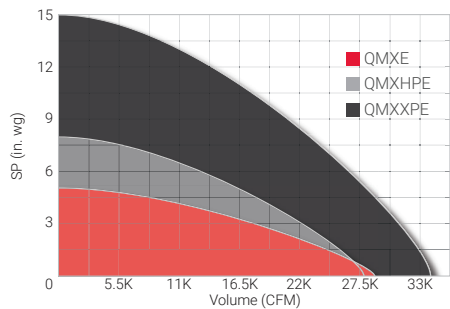
QMXU

Size Range:
QMXU - 90 to 600
QMXHPU - 90 to 600
QMXXPU - 150 to 600



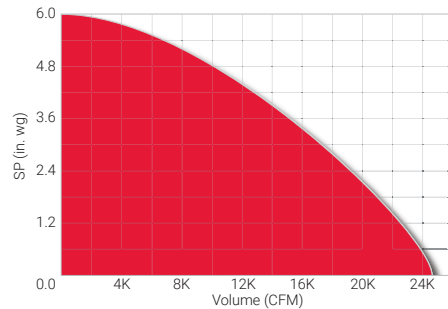
QMXE

Size Range:
QMXE - 90 to 300
QMXHPE - 90 to 300
QMXXPE - 150 to 300



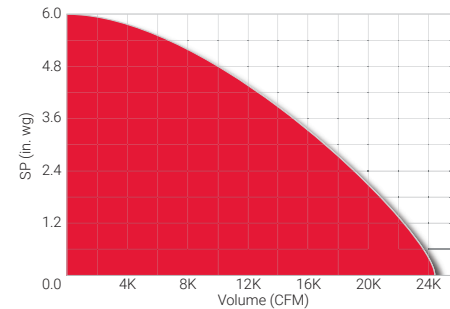
UCV

Size Range:
12 to 36



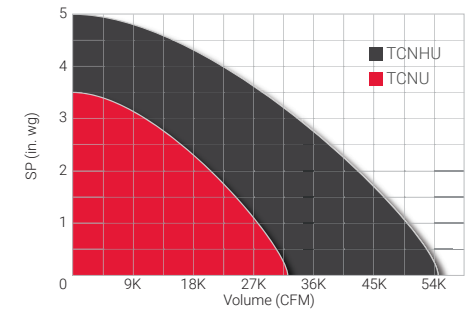
CVR

Size Range:
12 to 36



TCNU

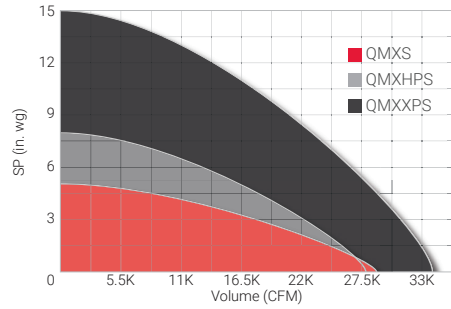
Size Range:
60 to 490



QMXS

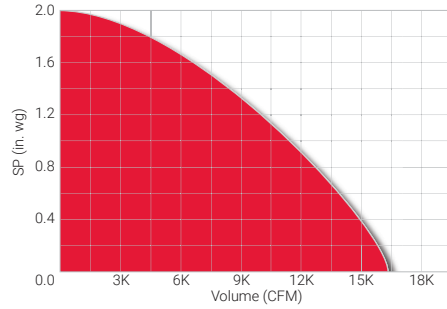
Size Range:

- QMXS - 90 to 300
- QMXHPS - 90 to 300
- QMXXPSS - 150 to 300



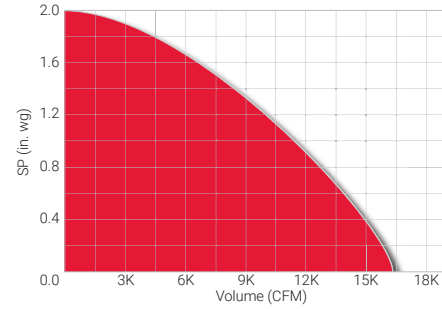
ASP

Size Range:
90 - 200



ASP-T

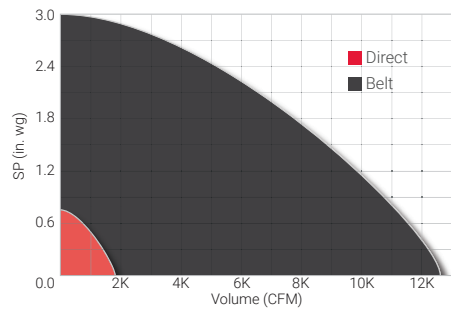
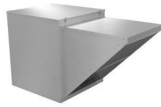
Size Range:
90 - 200



KSP

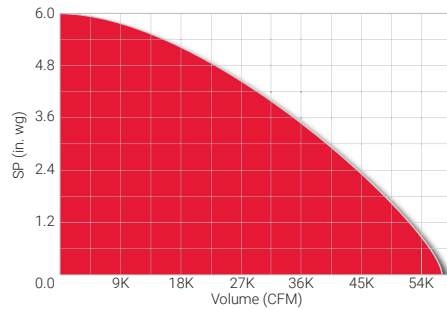
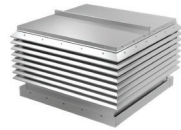
Size Range:

- KSPD - 94 to 127
- KSPB - 90 to 200



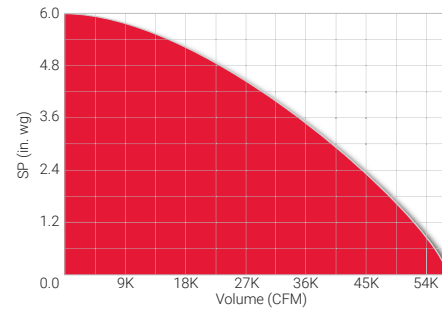
CFS

Size Range:
120 to 365



CVR-S

Size Range:
10 to 36



CookTools

A collection of tools for mechanical designers

6 Apps in one!

- FAN LAW CALCULATOR**
- SOUND CALCULATOR**
- DUCT DESIGNER**
- UNIT CONVERSION**
- AREA CALCULATOR**
- PSYCHROMETRIC CALCULATOR**



THE SMARTPHONE IS THE NEW TOOLBOX

MAKE SURE YOU HAVE THE LATEST TOOLS IN YOURS



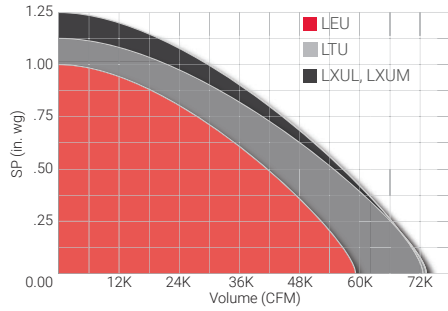
Apple



Android

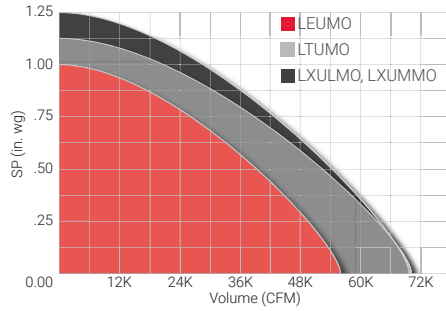
Low Silhouette

Size Range:
20 to 60



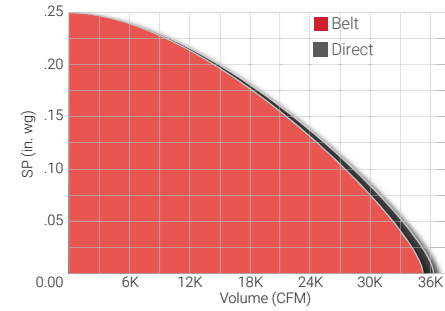
Low Silhouette (Motor Outside)

Size Range:
20 to 60



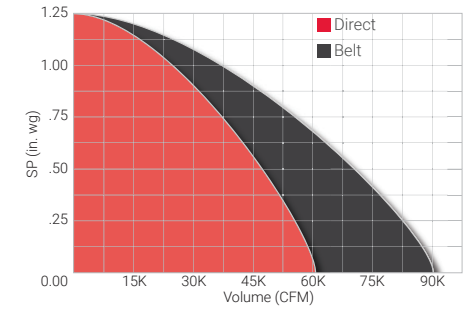
AU

Size Range:
Belt - 24 to 48
Direct - 20 to 48



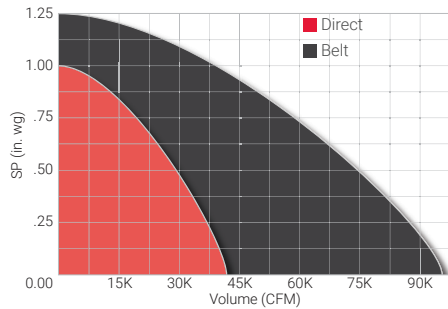
TU

Size Range:
Belt - 24 to 72
Direct - 20 to 60



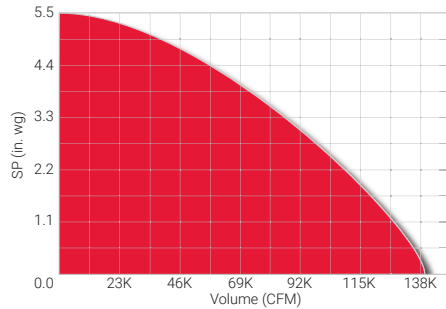
EU

Size Range:
Belt - 24 to 72
Direct - 20 to 48



AI

Size Range:
Level 1 - 31 to 160
Level 2 - 41 to 160



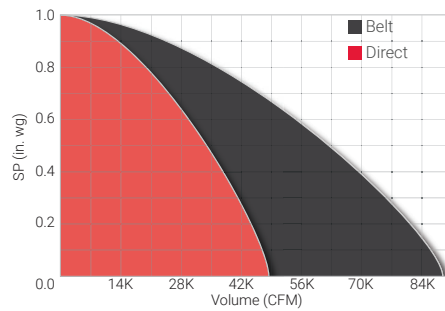
NEW LOOK

More Ways to Connect!



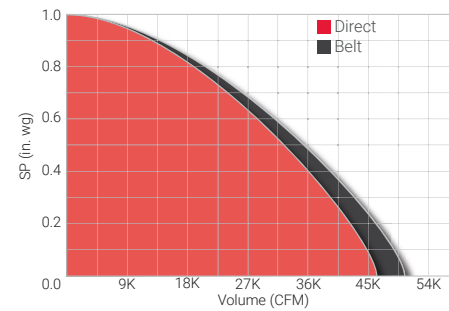
HEE

Size Range:
24 to 60



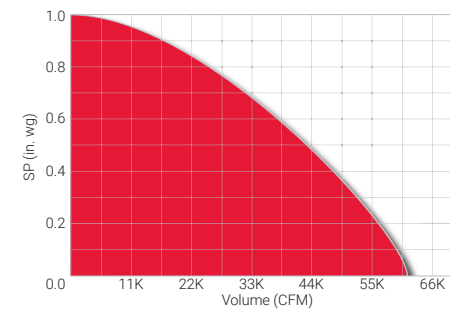
HER

Size Range:
20 to 60



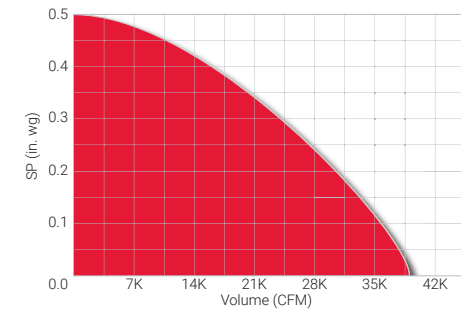
HXE Belt Drive

Size Range:
20 to 60



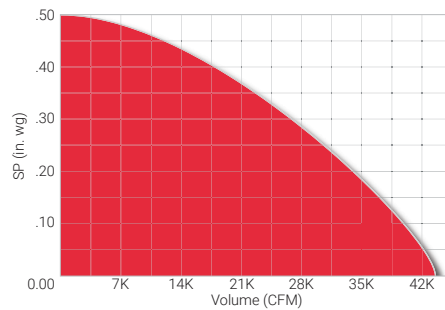
ECONOMIZER

Size Range:
MRSE-D - 24 to 54



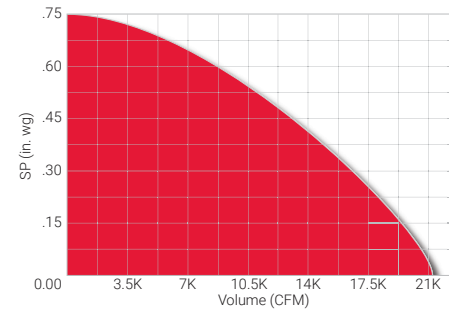
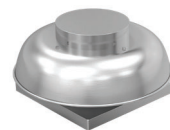
ETE

Size Range:
24 to 60



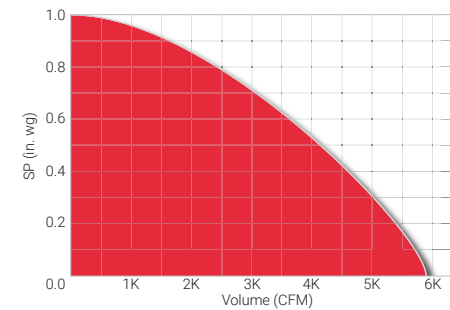
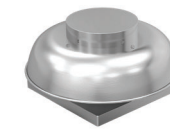
SEP

Size Range:
24 to 48



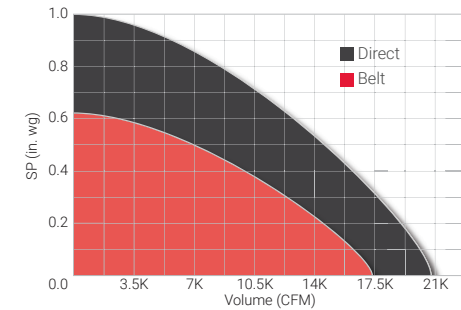
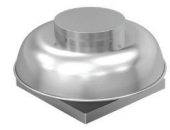
REBE

Size Range:
12 to 24



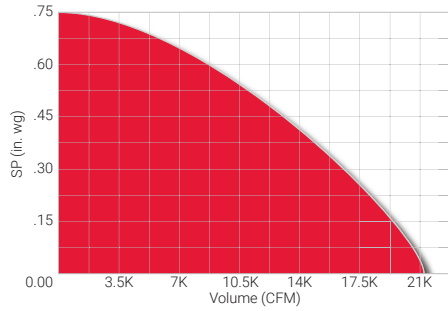
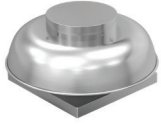
AQ

Size Range:
AQD - 12 to 48
AQB - 24 to 48



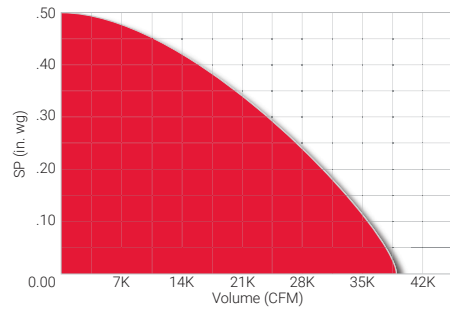
SEP

Size Range:
24 to 48



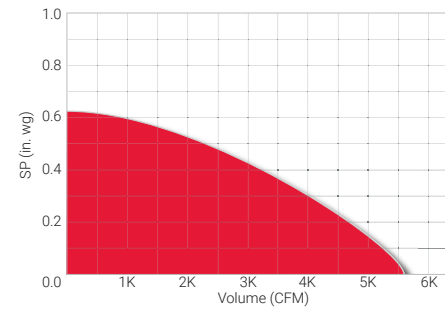
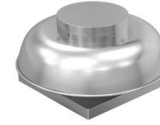
ETS

Size Range:
24 to 60



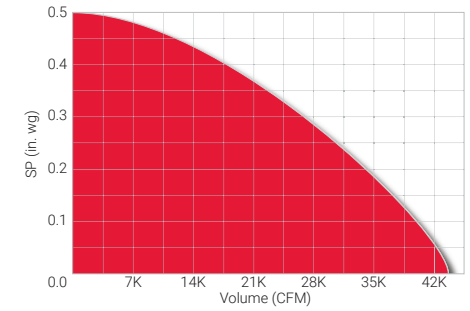
REBS

Size Range:
12 to 24



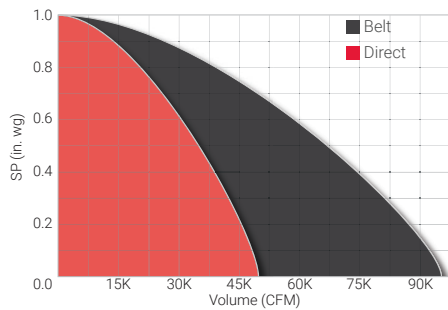
ECONOMIZER

Size Range:
MRS-D - 24 to 54
MRF-D - 24 to 54



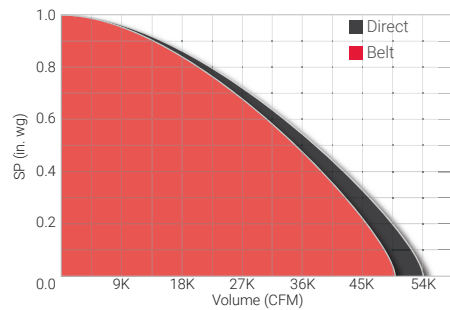
HES

Size Range:
20 to 54



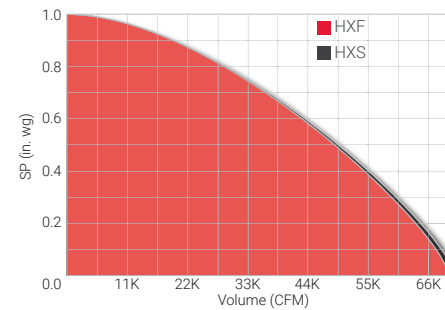
HEF

Size Range:
24 to 60



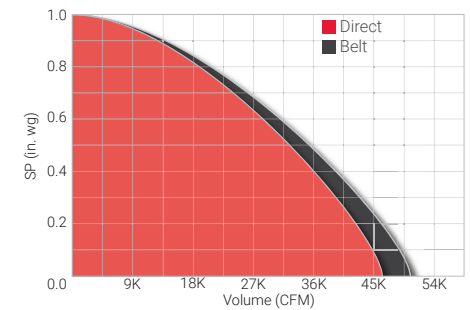
HX Belt Drive

Size Range:
20 to 60



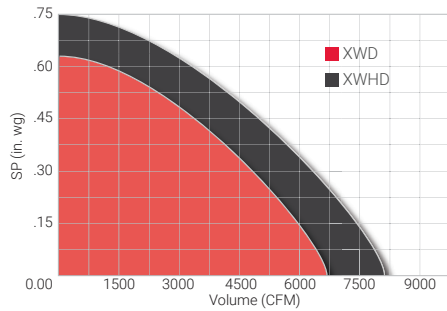
HER

Size Range:
20 to 60



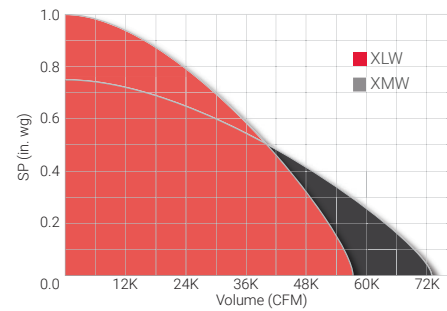
X Series

Size Range:
Standard - 8 to 24
HD - 12 to 24



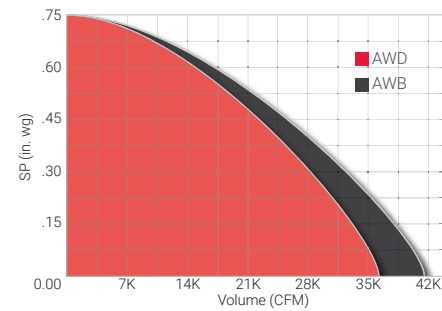
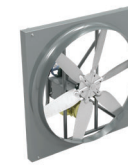
X.Stream

Size Range:
20 to 60



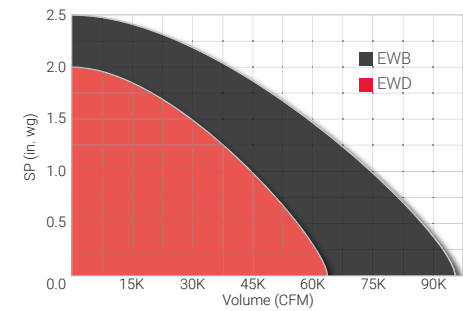
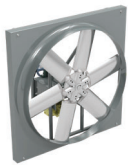
A Series

Size Range:
Belt - 12 to 48
Direct - 24 to 48



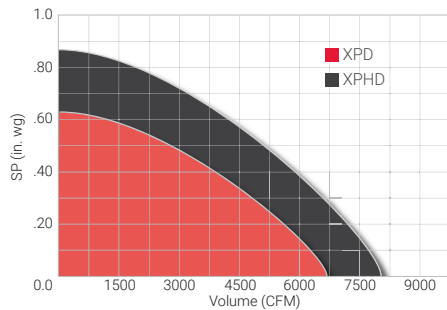
E Series

Size Range:
Belt - 24 to 72
Direct - 20 to 54



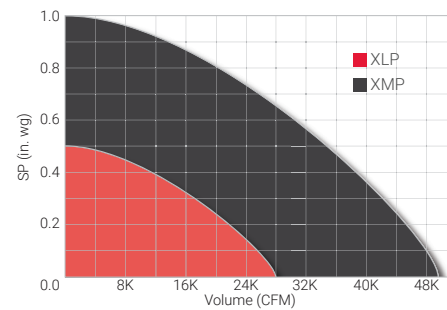
Packaged X Series

Size Range:
Standard - 8 to 24
HD - 12 to 24



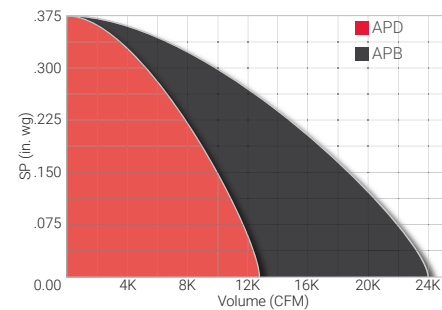
Packaged X.Stream

Size Range:
20 to 60



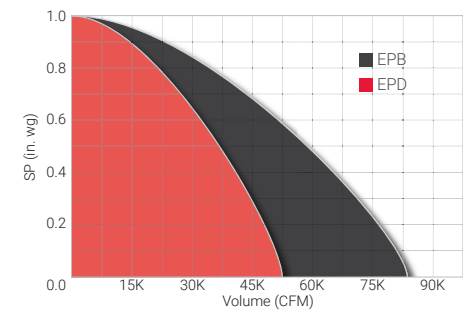
Packaged A Series

Size Range:
Belt - 24 to 48
Direct - 16 to 36



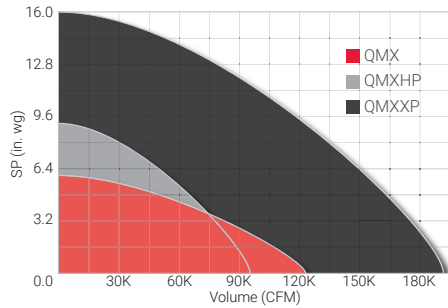
Packaged E Series

Size Range:
Belt - 24 to 72
Direct - 24 to 54



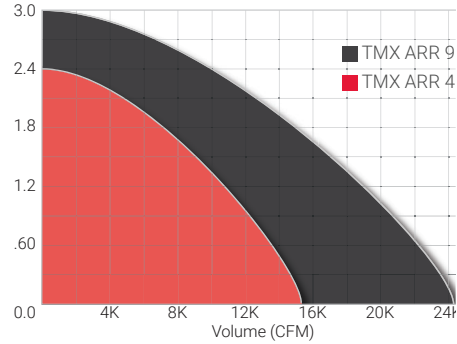
QMX

Size Range:
 QMX - 90 to 600
 QMXHP - 90 to 600
 QMXXP - 150 to 600



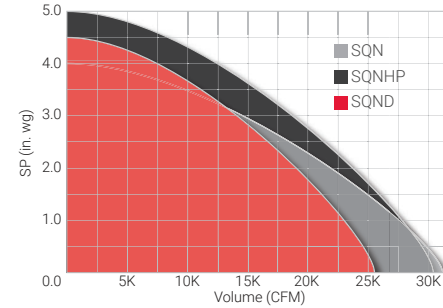
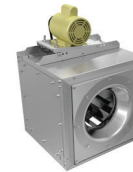
TMX

Size Range:
 ARR 9 - 90 to 330
 ARR 4 - 90 to 245



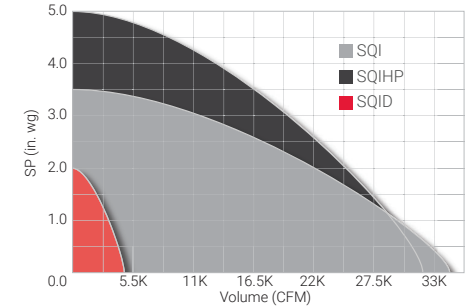
SQN

Size Range:
 SQN - 60 to 402
 SQNHP - 135 to 402
 SQND - 70 to 365



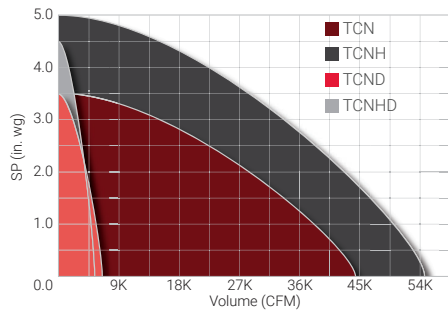
SQI

Size Range:
 SQI - 90 to 402
 SQIHP - 135 to 402
 SQID - 70 to 165



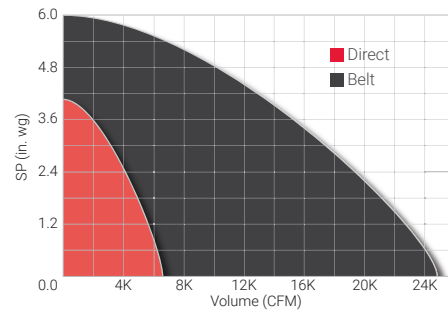
TCN

Size Range:
 TCN - 60 to 490
 TCND - 60 to 165



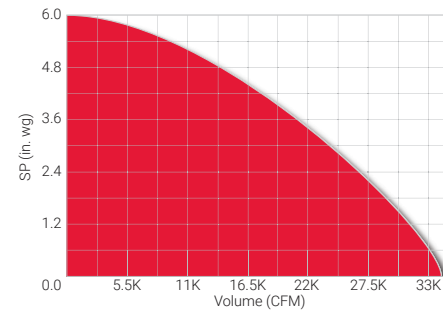
CV

Size Range:
 Belt - 10 to 36
 Direct - 8 to 20



CVS

Size Range:
 Belt - 10 to 36

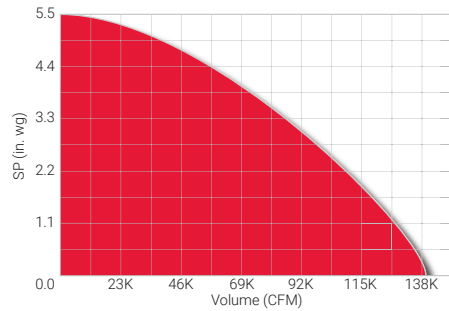


Notes:



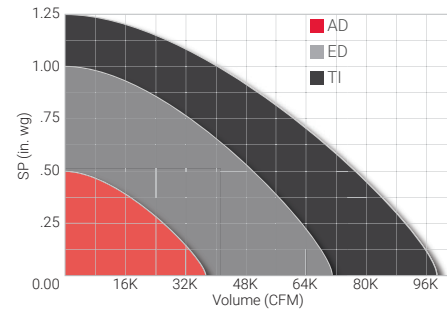
AI

Size Range:
Level 1 - 31 to 160
Level 2 - 41 to 160



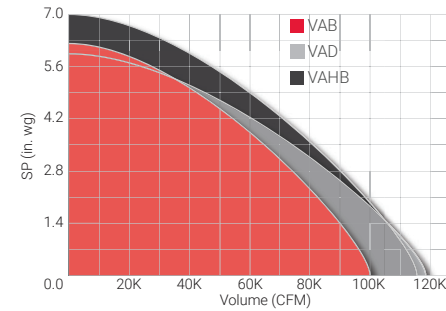
Tube Axial

Size Range:
A Series - 16 to 48
Triton - 20 to 72
E Series - 20 to 60



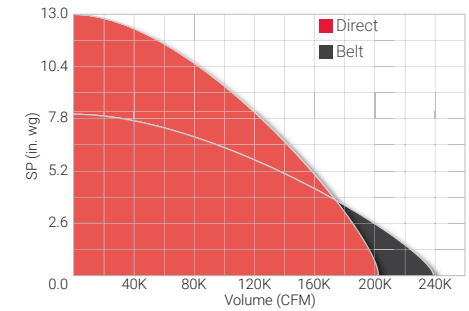
Fixed Pitch Vane Axial

Size Range:
VAD - 18 to 60
VAB - 12 to 60
VAHB - 12 to 60



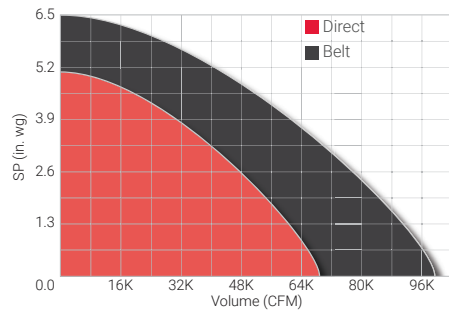
Adjustable Vane Axial

Size Range:
AVAD - 35 to 79
AVAB - 35 to 79



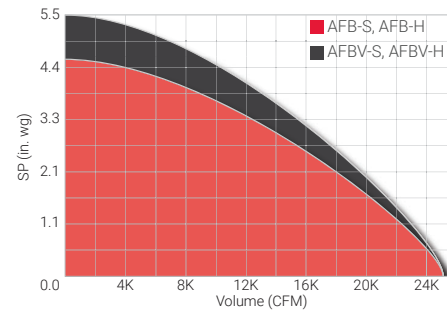
Fixed Tube Axial

Size Range:
AF-C - 12 to 60



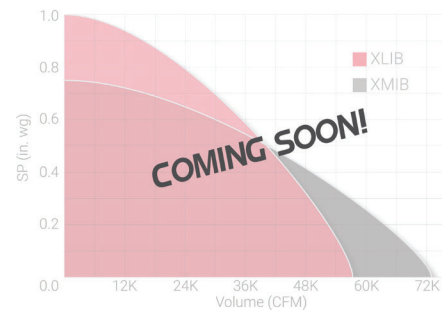
Fixed Tube Axial

Size Range:
AF-S - 12 to 36
AF-H - 12 to 36



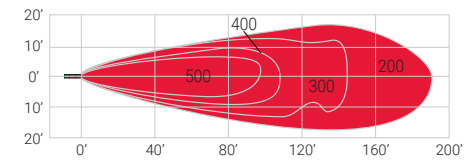
XIB

Size Range:
24 to 60



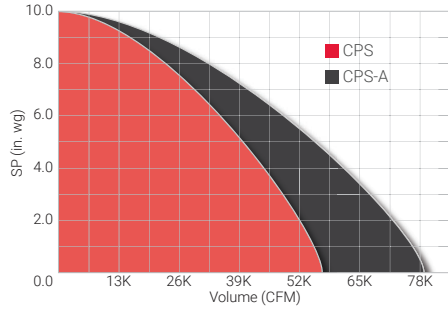
JetStream

Size Range:
31 to 41



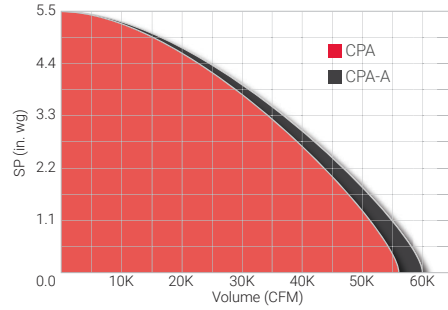
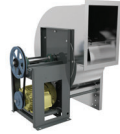
CPS

Size Range:
CPS - 60 to 490
CPS-A - 120 to 490



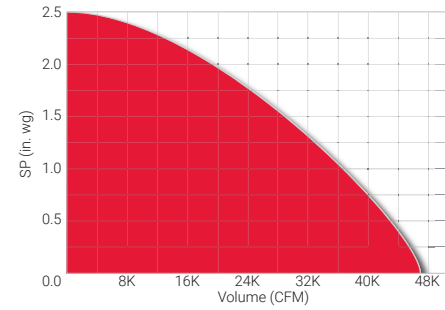
CPA

Size Range:
CPA - 60 to 490
CPA-A - 120 to 490



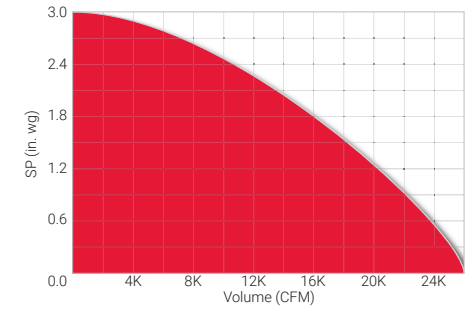
CPV

Size Range:
60 to 490



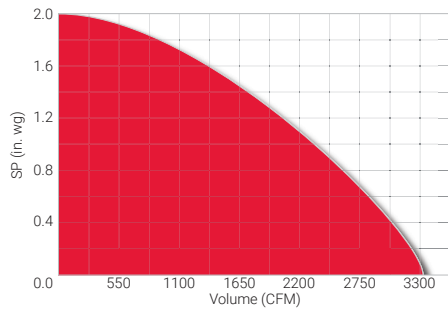
CPF B

Size Range:
100 to 300



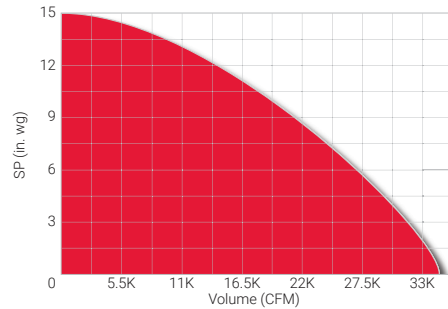
CPFD

Size Range:
6 to 12



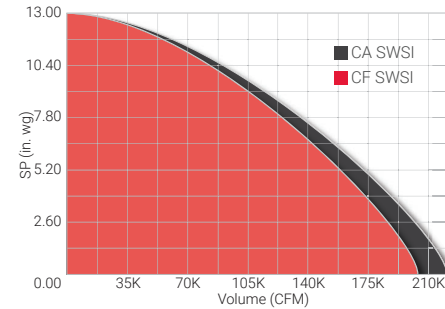
FCP

Size Range:
120 to 365



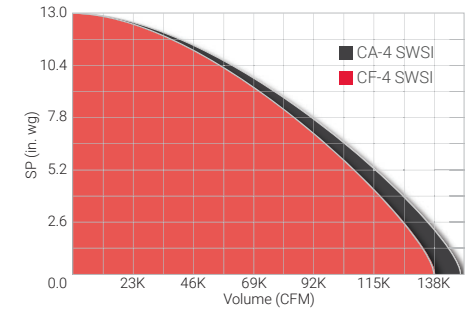
CA/CF SWSI

Size Range:
120 to 730



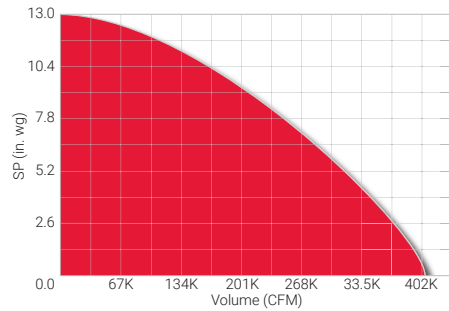
CA-4/CF-4 SWSI

Size Range:
120 to 730



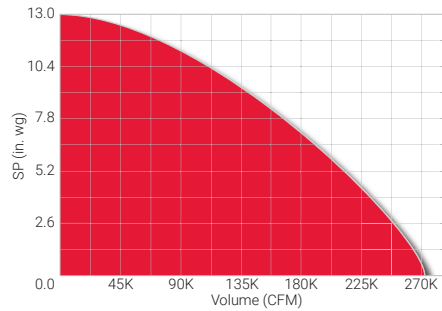
CA-DWDI

Size Range:
CA DWDI - 120 to 730



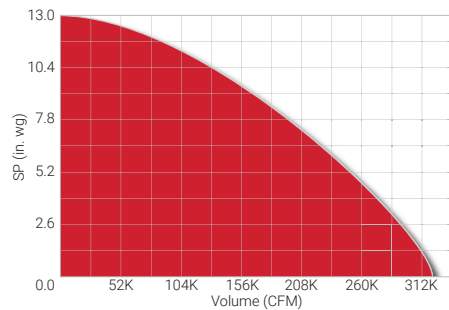
CA-4 DWDI

Size Range:
120 to 730



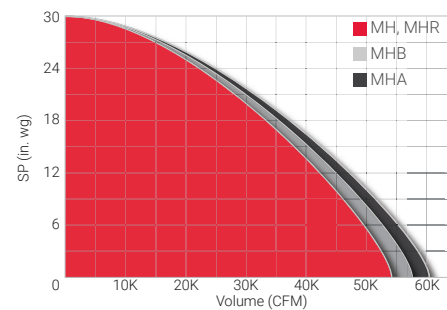
CAF-DW

Size Range:
120 to 730



Material Air Handlers

Size Range:
70 to 290



CA/CF

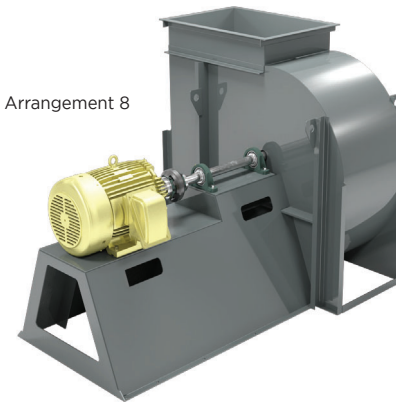
Direct Drive Industrial Blowers

Direct drive blowers provide reliability and reduced maintenance



Arrangement 4

Arrangement 8



Configuration Options:

- Class 1, 2, & 3
- Up to size 730
- 7 Discharge positions
- Airfoil (CA) or backward inclined (CF) wheels
- Units available up to 200 HP



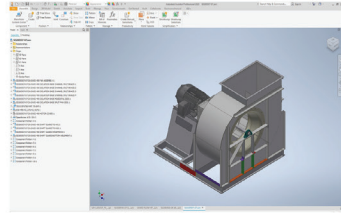
Contact your **Cook Representative** or visit lorencook.com for more information!



More Direct Drive Options

Have specialized direct drive applications?

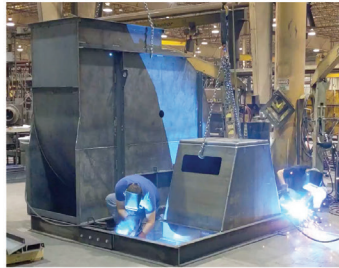
Cook designs, fabricates, welds, assembles, and delivers industrial blowers for your specialized requirements.



Utilizing the latest technology Cook designs and verifies the blowers and construction in a virtual environment.



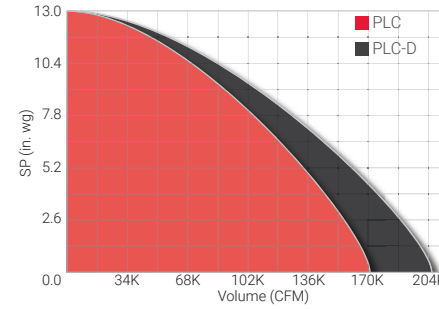
Tested and ready to ship direct to you for your specialized projects.



Fabricated, welded and assembled in the USA.

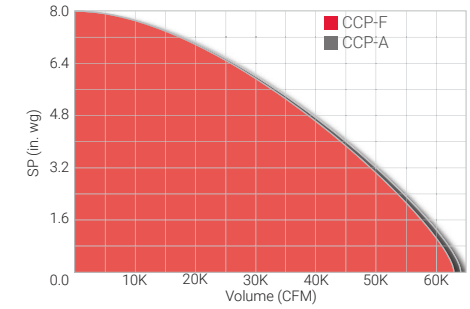
Plenum Fan

Size Range:
120 to 730



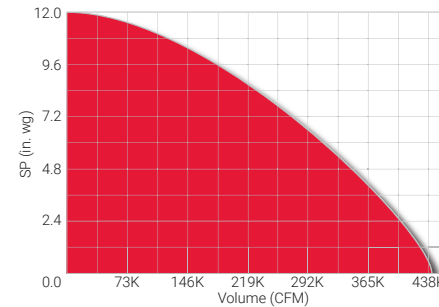
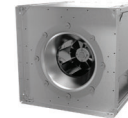
Plug Fan

Size Range:
120 to 445



Modular Plenum Array

Size Range:
100 to 402

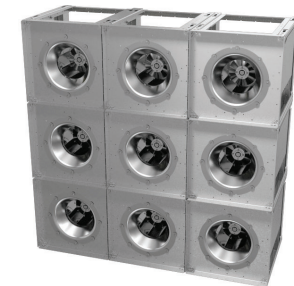


MPA

STACKING CHART

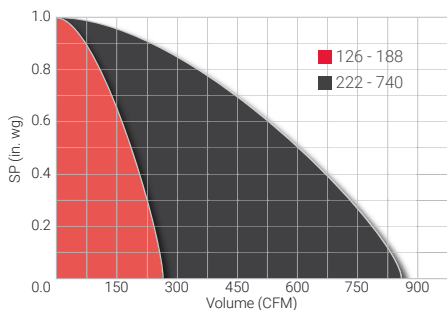
						SIZE RANGE
1x1	1x2	1x3	-	-	All	
-	2x2	2x3	2x4	2x5	100 - 365	
-	-	3x3	3x4	3x5	100 - 245	
-	-	-	4x4	4x5	100 - 165	

For Reference - 3x3



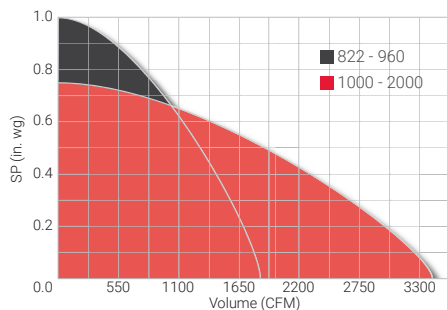
Gemini

Size Range:
GC - 126 to 740
GN - 126 to 740



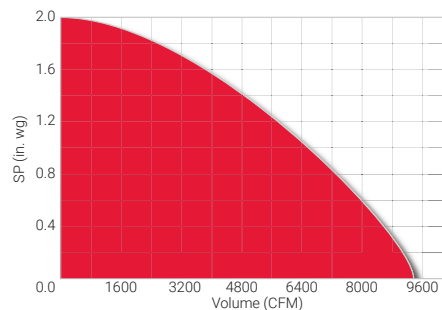
Gemini

Size Range:
GC - 822 to 2000
GN - 822 to 2000



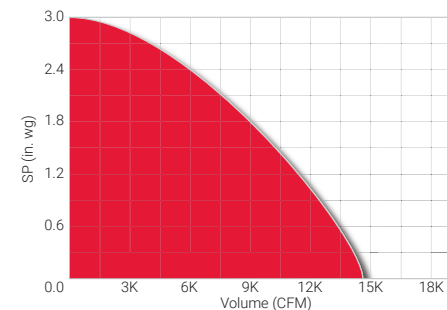
DB & DBX

Size Range:
8 to 18



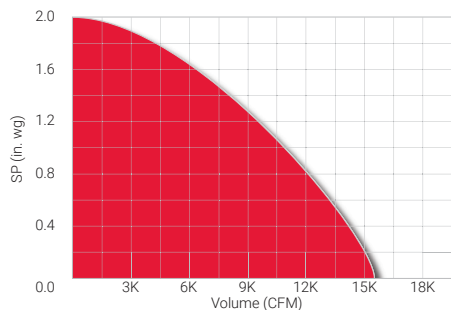
SDB

Size Range:
100 to 245

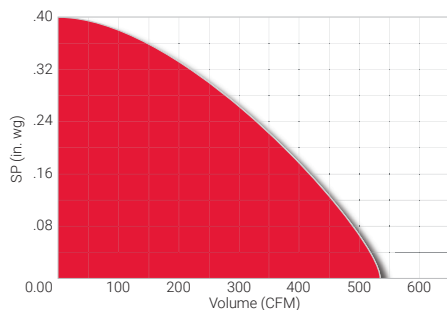


TDB

Size Range:
8 to 18



CBF



GCVF 100

Named Energy Star Most Efficient Ventilating Fans for the fourth consecutive year

Most Efficient 2022
www.energystar.gov

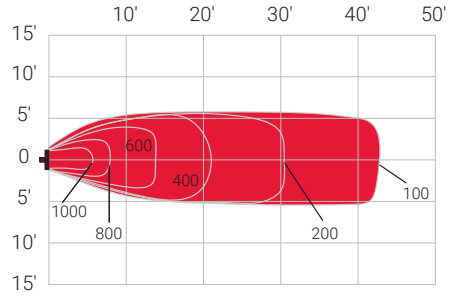
Most Efficient 2021
www.energystar.gov

Most Efficient 2020
www.energystar.gov

Most Efficient 2019
www.energystar.gov

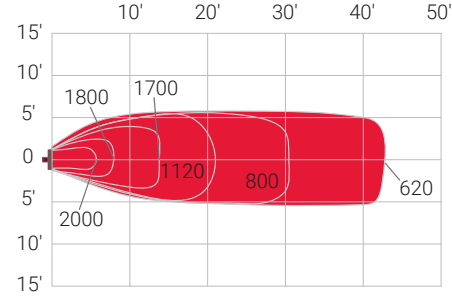
Air Circulator Heads

Size Range:
CAC-ACH - 24" & 30"
CAC-ACHO - 24" & 30"



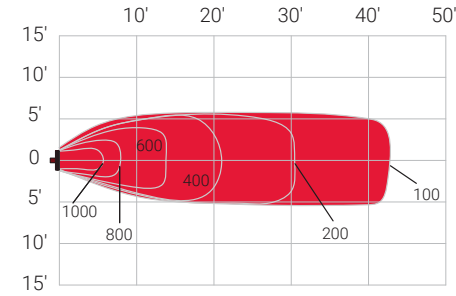
Air Circulator (Washdown)

Size Range:
CAC-IHPWD 24" to 30"



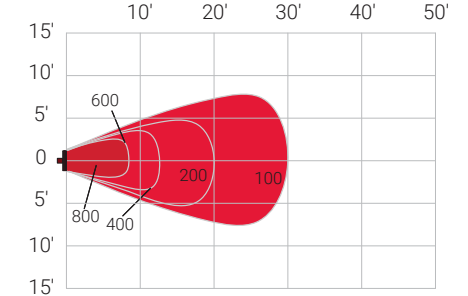
Mini-Blower Head

Size Range:
CAC-MBDY 24" & 30"



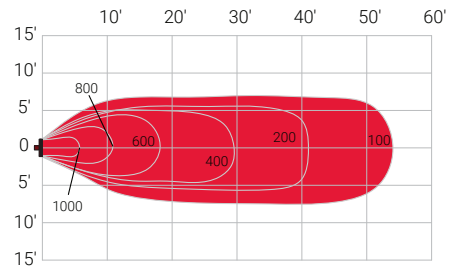
Ceiling Mount

Size Range:
CAC-UTE 18"



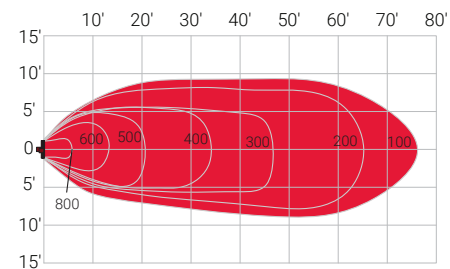
Suspension Blower

Size Range:
CAC-SBD - 36" & 42"

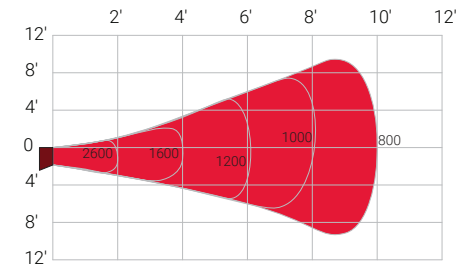


Portable Blowers

Size Range:
CAC-PBB - 36 to 48"

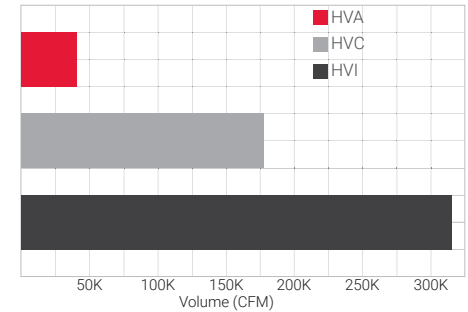


Air Curtain



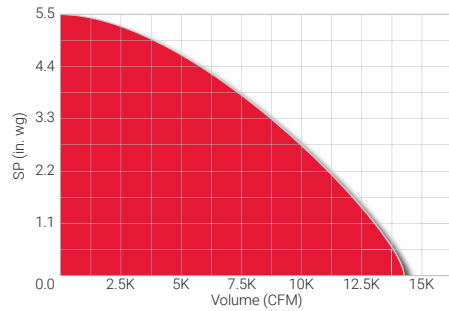
HVLS

Size Range:
HVA - 7 to 10'
HVC - 8 to 24'
HVI - 8 to 24'



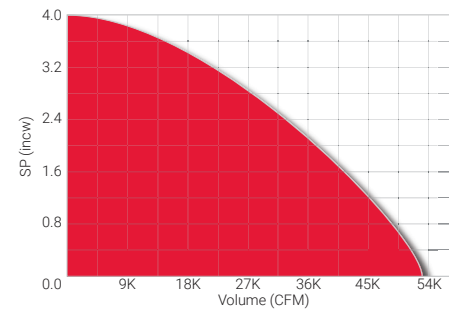
CPSLE

Size Range:
60 to 245



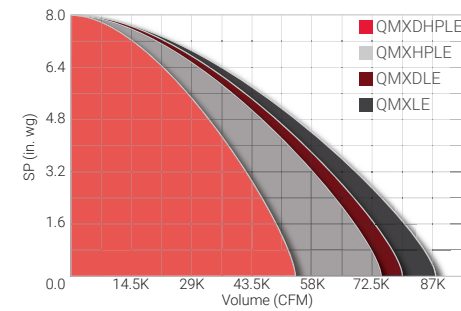
TCNHBLE

Size Range:
100 to 490



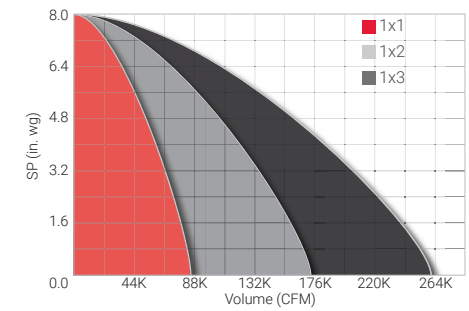
QMXLE

Size Range:
QMX - 90 to 490
QMXD - 150 to 490



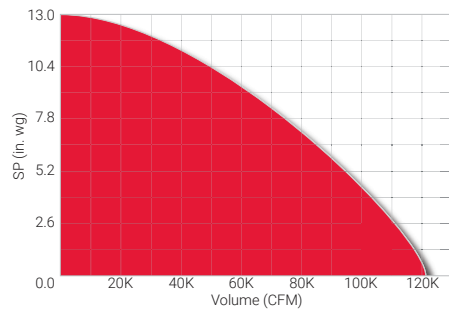
Fans with Mixing Boxes

- ▶ Convenient method of connecting parallel laboratory exhaust fans.
- ▶ Allows for redundancy and rotation of idle fans.



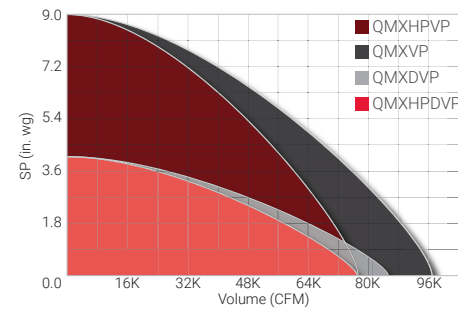
CAVP

Size Range:
120 to 730



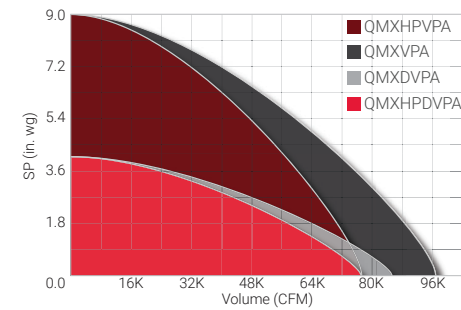
QMXVP

Size Range:
QMX - 90 to 600
QMXD - 150 to 600



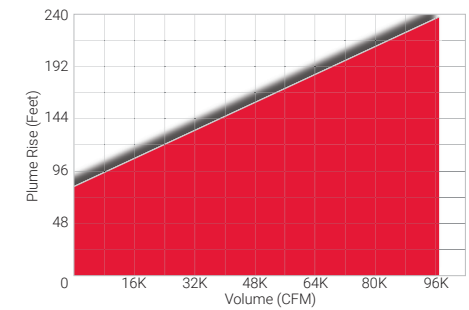
QMXVPA

Size Range:
120 to 600



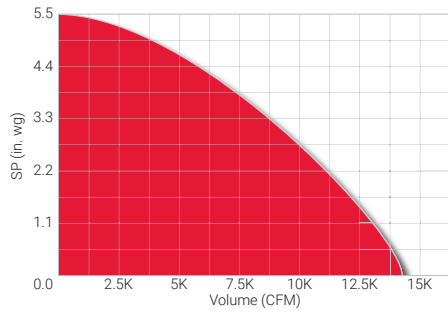
Power Plume

Size Range:
Low Dilution 250 to 763
High Dilution 250 to 763



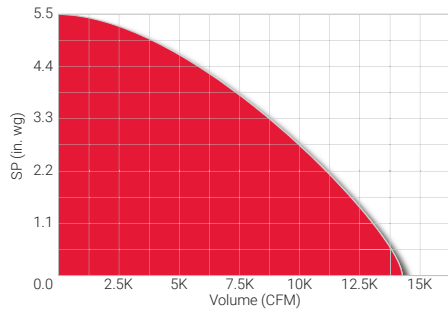
CPSLE-S

Size Range:
60 to 365



CPSFE

Size Range:
60 to 365



QMX+PP

QMX + Power Plume

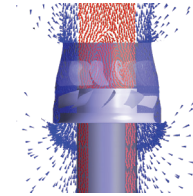
Most innovative energy saving exhaust solution

The combo decouples lab exhaust from dilution and plume air, optimizing system performance as lab demand and ambient wind conditions vary

QMX + Power-Plume provides unparalleled energy efficiency in a space-efficient package

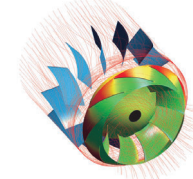


Standard Features:



Power-Plume®

- Powered Induction
- Powerful Plume
- Dilution from 200-1000%
- Independent of Lab Exhaust
- No Bypass Air Needed
- Wind-Dependent Control Option



QMX

- Most Efficient Mixed Flow Fan
- Demand-Based Modulation to 35%
- Direct or Belt Drive
- EZ-out Option

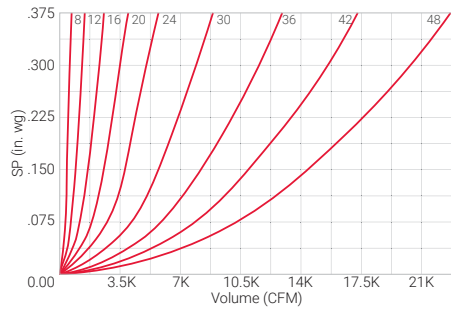
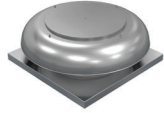


Contact your **Cook Representative** or visit lorencook.com for more information!



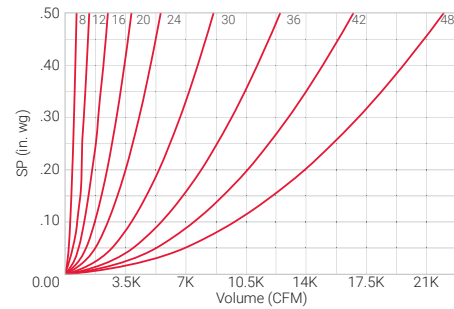
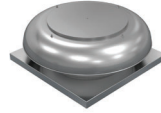
PR (Intake)

Size Range:
8 - 48"



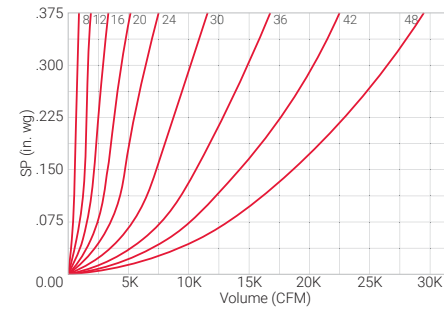
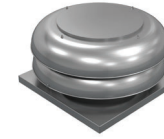
PR (Relief)

Size Range:
8 - 48"



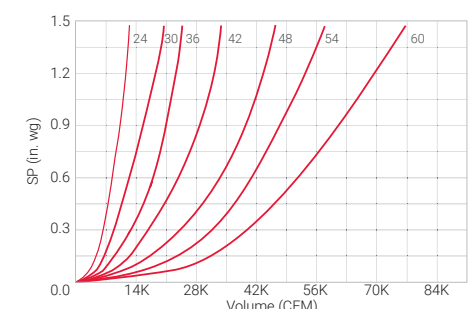
TR

Size Range:
8 - 48"



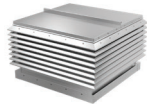
LSUG

Size Range:
24 to 60"

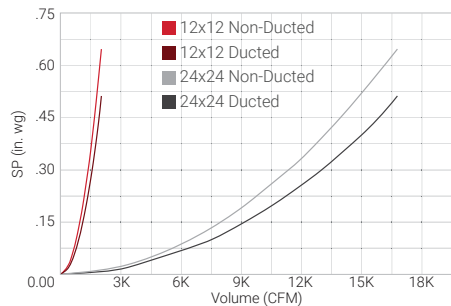


TRE (Intake)

Size Range:
12 x 12 to 60 x 120"

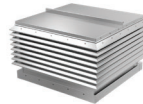


Airflow:
Up to 63,300 CFM

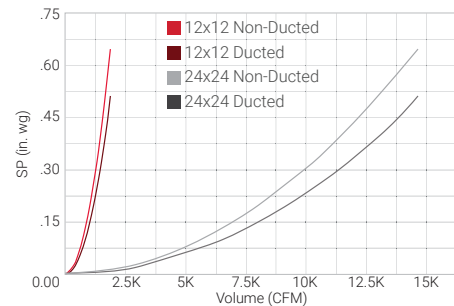


TRE (Relief)

Size Range:
12 x 12 to 60 x 120"

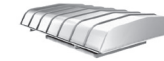


Airflow:
Up to 56,500 CFM

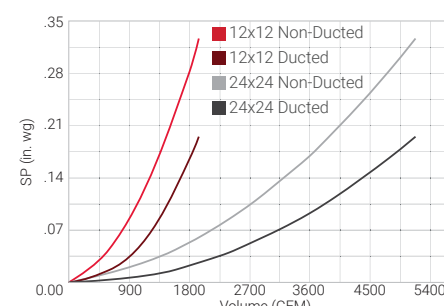


GI

Size Range:
12 X 12 to 72 x 144"

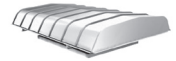


Airflow:
Up to 93,600 CFM

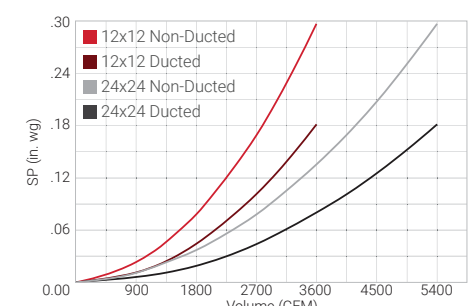


GR

Size Range:
12 X 12 to 72 x 144"

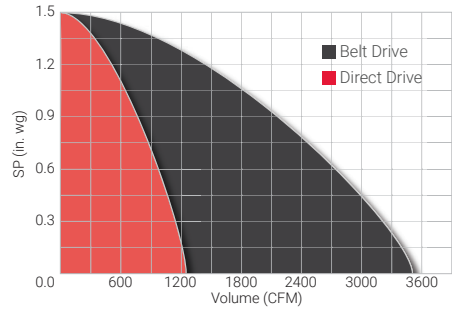


Airflow:
Up to 86,100 CFM



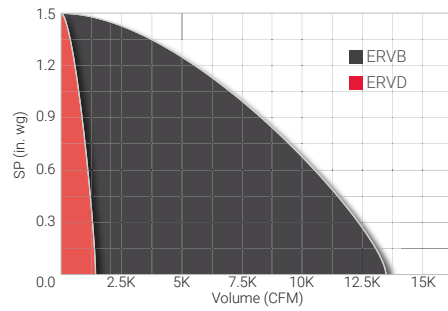
ERVX

Size Range:
Direct - 500 to 1250
Belt - 1500 to 3500



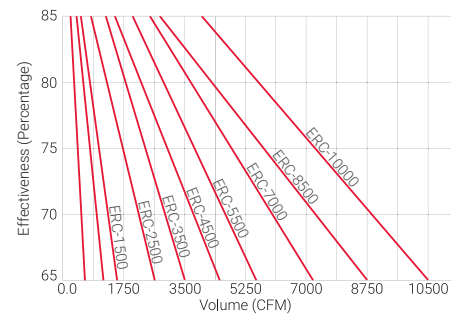
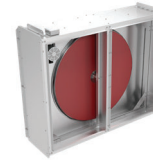
ERV

Size Range:
Direct - 500 to 1000
Belt - 1500 to 10000



ERC

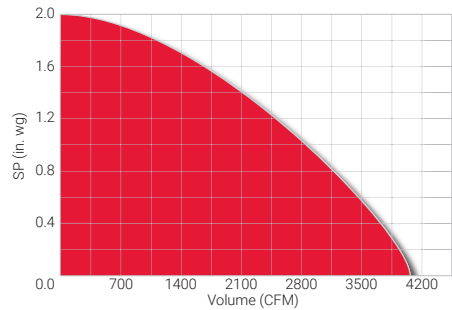
Size Range:
500 to 10000



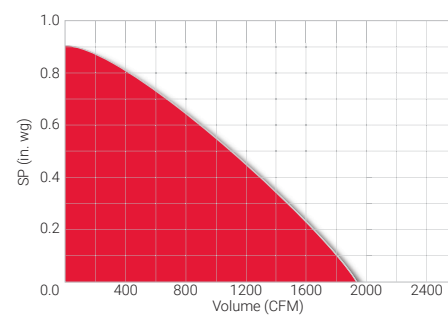
Notes:

HMD

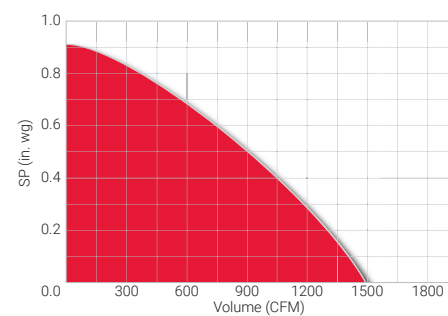
Size Range:
2400 to 4100



MAC



MAC UV



Air Balance Kit

The Vari-Flow Air Balance Kit (VFABK) integrates and simplifies the installation while enhancing the function of Vari-Flow motors and controls.



2 Speed Controller

The Vari-Flow 2 Speed Controller (VF2SC) allows the setting of two separate motor speeds and switching between these speeds by an external control device.



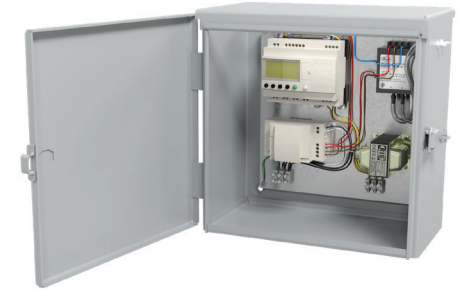
Pressure Controller

The Vari-Flow Pressure Controller (VFPC) addresses a wide variety of pressure-based applications. This controller is compact and easy to set up. Available in 1", 2" and 5" transducers.



Custom Pressure Controller

The Vari-Flow Custom Pressure Controller (VFCPC) provides customizable pressure control.



SimpliDrive

The Vari-Flow SimpliDrive comes mounted, wired and programmed from the factory. SimpliDrive allows for easy demand-based control of the fan.



Remote Speed Controller

The Vari-Flow Remote Speed Controller (VFRSC) allows the speed of a Vari-Flow motor to be manually adjusted and set from a location other than the fan.



IAQ Controllers

The Vari-Flow Indoor Air Quality family of controllers is used to modulate fan speed to maintain a preset temperature, humidity, CO₂, or VOC.



Notes:



VFD

Fan, motor, and VFD from one source. Robust, reliable, and easy to program. All VFD's can directly interface with Cook's complete line of Vari-Flow controls.



Fan Monitor Industrial

FMI provides on-demand connection to your critical fan systems. Monitor multiple fans from anywhere with FMI's easy-to-use web-based interface. Network communication with BACnet and Modbus.



NEED HELP WITH EC MOTORS AND CONTROLLERS?

Check out Pressure Control Basics and Cook Vari-Flow FAQ!



Why Should I Use EC Motors and Controls? Cook Vari-Flow® FAQ



VARI-FLOW CONTROLS





2015 E. Dale St. Springfield, MO 65803 | 417-869-6474 | Fax: 417-862-3820 | lorencook.com